

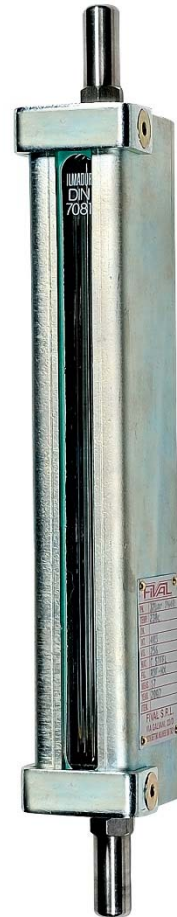
REFLEX STEEL LEVEL GAUGE RBF

MAIN CHARACTERISTICS

The RBF level gauge with reflection glass is intended for the immediate visual indication of a level of liquid in a tank. The working principle is based on the diffraction of the light through a prism. In practice, for the user the liquid part will appear sinks there and the brilliant gaseous part.

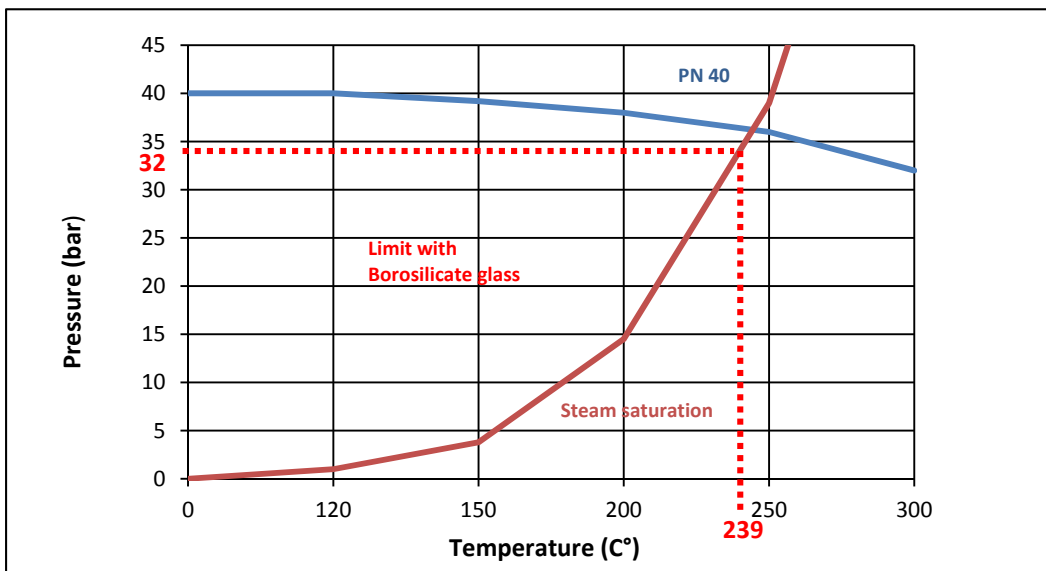
Of carbon steel standard construction, The level gauge suits perfectly for the level indication on steam boilers until 25 bar. It is equipped with one borosilicate glass following DIN 7081 standard type A.

The level gauge RBF must be linked by two NX isolation valves. The connection of the valve is made through smoother pipes \varnothing 16 mm allowing an adjustment of the center distance.



LIMITS OF USE

| | |
|-----------------------------------|-------------------------------|
| Max allowed fluid pressure : PS | 40 bar to 20°C |
| Max allowed fluid temperature :TS | 239°C with borosilicate glass |
| Use on saturated steam | 32 bar to 239°C |



Modifications reserved



SECTORIEL S.A.
 45 rue du Ruisseau
 38290 SAINT QUENTIN-FALLAVIER – FRANCE
 Tél : +33 4 74 94 90 70 – Fax : +33 4 74 94 13 95
www.sectoriel.fr / Email : sectoriel@sectoriel.fr

| | |
|------------|------------|
| Nbr. pages | 1/3 |
| Ref. | FT2320 ENG |
| Rev. | 02 |
| Date | 06/14 |

REFLEX STEEL LEVEL GAUGE RBF

REGULATIONS AND STANDARDS OF CONSTRUCTION

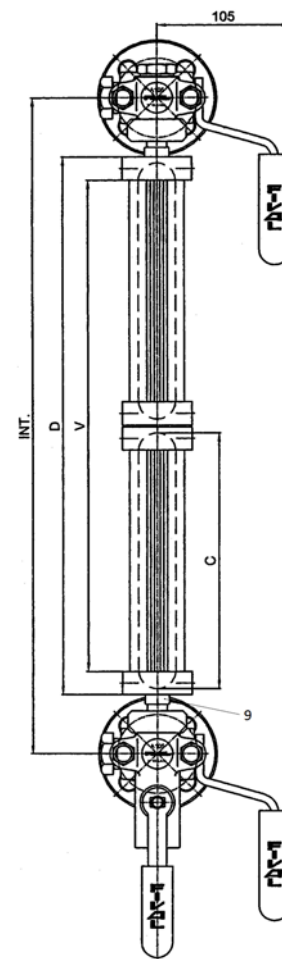
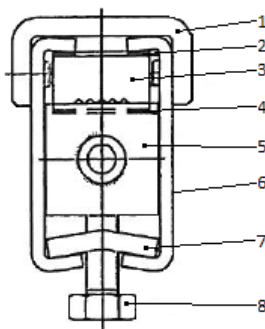
| Item | Standard |
|------------------------------------|-----------|
| Pressure equipment directive 97/23 | Excluded |
| Dimensions of the glass | DIN 7081 |
| Steel materials | EN 1503-1 |

CONNECTION

Smooths nipples \varnothing 16mm length 60mm.

CONSTRUCTION

| N° | Item | Material |
|----|---------------------|------------------------|
| 1 | Stirrup | Carbon steel |
| 2 | Spacer | Fiber |
| 3 | Reflex glass | Borosilicate |
| 4 | Lower gasket | Stainless graphit |
| 5 | Body | Carbon steel |
| 6 | Cover | Carbon steel |
| 7 | Plate of tightening | Carbon steel |
| 8 | Bolts | Acier zingué grad. 8.8 |
| 9 | Nipples | Stainless steel |



DIMENSIONS (mm) AND WEIGHT (kg)

| Size | 3 | 4 | 5 | 6 | 7 | 8 | 9 |
|---------------------|-----|-----|-----|-----|-----|-----|-----|
| Center distance INT | 285 | 310 | 340 | 370 | 400 | 440 | 460 |
| D | 178 | 203 | 233 | 263 | 293 | 333 | 353 |
| Visibility | 141 | 166 | 196 | 226 | 256 | 296 | 313 |
| C | 165 | 190 | 220 | 250 | 280 | 320 | 340 |
| Glass type | A | A | A | A | A | A | A |
| Weight (kg) | 3,1 | 3,5 | 3,9 | 3,4 | 4,8 | 5,4 | 5,7 |

| Size | 2x4 | 2x5 | 2x6 | 2x7 | 2x8 | 2x9 | 3x6 | 3x7 | 3x8 | 3x9 |
|---------------------|-----|-----|-----|------|------|------|------|------|------|------|
| Center distance INT | 515 | 575 | 635 | 695 | 775 | 815 | 900 | 990 | 1110 | 1170 |
| D | 406 | 466 | 526 | 586 | 666 | 706 | 789 | 879 | 999 | 1059 |
| Visibility | 367 | 427 | 489 | 549 | 628 | 668 | 751 | 841 | 961 | 1021 |
| C | 190 | 220 | 250 | 280 | 320 | 340 | 250 | 280 | 320 | 340 |
| GlassType | A | A | A | A | A | A | A | A | A | A |
| Weight (kg) | 7 | 8 | 9,4 | 10,4 | 12,6 | 15,2 | 14,1 | 15,6 | 18,9 | 22,8 |

| Size | 4x7 | 4x8 | 4x9 | 5x7 | 5x8 | 5x9 | 6x8 | 6x9 | 7x9 |
|---------------------|------|------|------|------|------|------|------|------|------|
| Center distance INT | 1285 | 1445 | 1525 | 1580 | 1780 | 1880 | 2115 | 2235 | 2590 |
| D | 1172 | 1332 | 1412 | 1465 | 1665 | 1765 | 1998 | 2118 | 2471 |
| Visibility | 1134 | 1294 | 1374 | 1427 | 1627 | 1727 | 1960 | 2080 | 2433 |
| C | 280 | 320 | 340 | 280 | 320 | 340 | 320 | 340 | 340 |
| Glass type | A | A | A | A | A | A | A | A | A |
| Weight (kg) | 21 | 25 | 31 | 26 | 32 | 38 | 38 | 46 | 53 |

Modifications reserved



SECTORIEL S.A.
45 rue du Ruisseau
38290 SAINT QUENTIN-FALLAVIER – FRANCE
Tél : +33 4 74 94 90 70 – Fax : +33 4 74 94 13 95
www.sectoriel.fr / Email : sectoriel@sectoriel.fr

| | |
|------------|------------|
| Nbr. pages | 2/3 |
| Ref. | FT2320 ENG |
| Rev. | 02 |
| Date | 06/14 |

REFLEX STEEL LEVEL GAUGE RBF

MOUNTING AND USE

- 1 - Isolate the supply system of the level gauge and remove the indicator case from reflex of the installation.
- 2 - To install the borosilicate glass, begin by unscrewing in the order bolts bootstraps (Item 8) of the case and unscrew the screws of the stirrups of security (Item 1).
- 3 - Remove delicately both lids (Item 6) from the case to remove the reflexion glass (Item 3) damaged, the superior spacer (Item 2) and the lower joint (Item 4).
- 4 - Clean the impact of gasket (Item 4). It is very important to take up a new gasket on the absolutely cleaned surface. (Never reuse old gasket).
- 5 - Mounting successively :
 - Lower gasket (Item 4), glass with srooved face in contact with lover gasket (Item 3), superior spacer (Item 2), Put back in position both lids (Item 6) of the case, and the stirrups of security (Item 1).
 - Tighten the screws of stirrups (Item 1) of security.
 - Tighten bolts bootstraps (Item 8).
 - Never tighten the level gauge body in a vice but put it on a plane surface.
 - Never use adhesives.
- 6 - Put back the assembly on the installation and open the supply system.

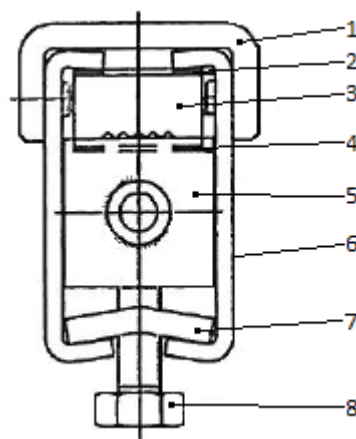
MAINTENANCE

- 1 - Visual control.
- 2 - Cleaning of glass (cloth).

INDICATIVE PLAN OF PLAN TIGHTENING :

Respect le torque of tightening indicated for level indicator.

For the RBF level gauge this torque value is 37 Nm



SPARE PARTS


- 1 - Glass borosilicate: FT 2350

| Models | A1 | A2 | A3 | A4 | A5 | A6 | A7 | A8 | A9 |
|--------|---------|---------|---------|---------|---------|---------|---------|---------|---------|
| Code | 2350911 | 2350912 | 2350913 | 2350914 | 2350915 | 2350916 | 2350917 | 2350918 | 2350919 |

OPTIONS

- 1 - Valves type NX : FT 2315
- 2 - Nipples (Item 9) : lenght 57,5 – 62 – 102 mm

Modifications reserved

| | | | |
|---|--|------------|------------|
|  | SECTORIEL S.A. 45 rue du Ruisseau 38290 SAINT QUENTIN-FALLAVIER – FRANCE Tél : +33 4 74 94 90 70 – Fax : +33 4 74 94 13 95 www.sectoriel.fr / Email : sectoriel@sectoriel.fr | Nbr. pages | 3/3 |
| | | Ref. | FT2320 ENG |
| | | Rev. | 02 |
| | | Date | 06/14 |